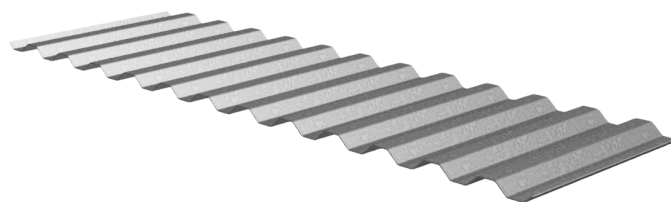
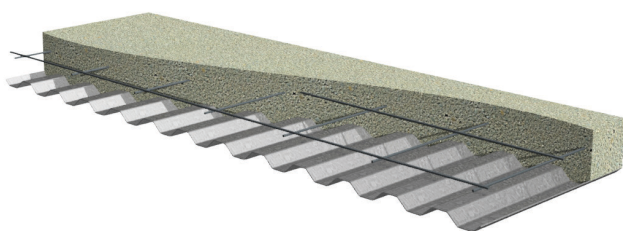
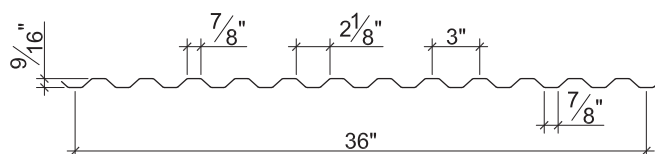


SHALLOW VERCOR® (SV) NON-COMPOSITE & ROOF DECK GRADE 80 STEEL

ASD



Nominal Dimensions



Section Properties

	Deck Weight	Base Metal Thickness	Yield Strength	Effective Moment of Inertia at Service Load $I_d = (2I_e + I_g)/3$		Effective Section Modulus at $F_y = 60$ ksi		Vertical Web Shear
Deck Gage	w_{dd} (psf)	t (in.)	F_y (ksi)	I_{d+} (in ⁴ /ft)	I_{d-} (in ⁴ /ft)	S_{e+} (in ³ /ft)	S_{e-} (in ³ /ft)	V_n/Ω (lb/ft)
26	1.0	0.0179	60	0.013	0.013	0.041	0.043	1492
24	1.3	0.0239	60	0.018	0.018	0.059	0.059	1988
22	1.6	0.0299	60	0.022	0.022	0.073	0.073	2482
20	1.9	0.0359	60	0.027	0.027	0.087	0.087	2974

Allowable Reactions at Supports Based on Web Crippling, R_n/Ω (lb/ft)

Bearing Length of Webs								
Deck Gage	One-Flange Loading				Two-Flange Loading			
	End Bearing		Interior Bearing		End Bearing		Interior Bearing	
	1 1/2"	2"	1 1/2"	2"	1 1/2"	2"	1 1/2"	2"
26	582	644	788	862	535	582	962	1060
24	981	1081	1375	1497	999	1080	1709	1874
22	1467	1612	2105	2283	1597	1721	2644	2889
20	2036	2230	2974	3215	2329	2500	3761	4096

Standard Features

- ASTM A653 SS GR80 with G90
- Standard lengths – 6'-0" to 40'-0"
- IAPMO UES ER-2018 and UL Listed
- Tables conform to ANSI/SDI NC-2017 and RD-2017

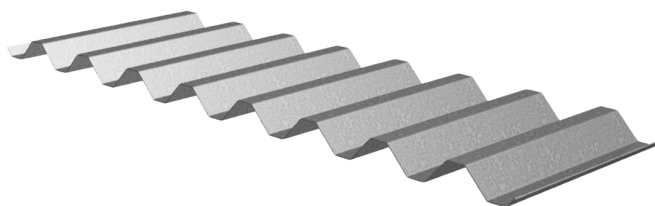
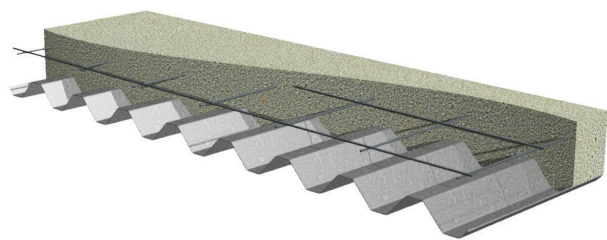
Optional Features

- Inquire regarding cost and lead times for:
 - Short cuts < 6'-0"
 - Sheet Lengths > 40'-0"
 - Alternative metallic and painted finishes
- Side-lap Venting

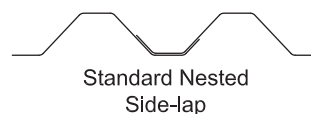
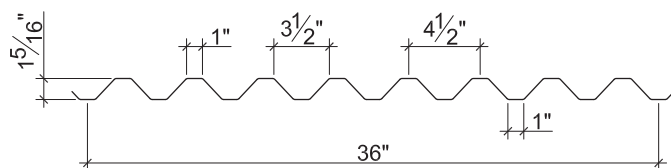
NOTICE: Design defects that could cause injury or death may result from relying on the information in this document without independent verification by a qualified professional. The information in this document is provided "AS IS". Nucor Corporation and its affiliates expressly disclaim: (i) any and all representations, warranties and conditions and (ii) all liability arising out of or related to this document and the information in it.

DEEP VERCOR® (DV) NON-COMPOSITE & ROOF DECK GRADE 80 STEEL

ASD



Nominal Dimensions



Section Properties

	Deck Weight	Base Metal Thickness	Yield Strength	Effective Moment of Inertia at Service Load $I_d = (2I_e + I_g)/3$		Effective Section Modulus at $F_y = 60$ ksi		Vertical Web Shear
Deck Gage	w_{dd} (psf)	t (in.)	F_y (ksi)	I_{d+} (in ⁴ /ft)	I_{d-} (in ⁴ /ft)	S_{e+} (in ³ /ft)	S_{e-} (in ³ /ft)	V_n/Ω (lb/ft)
26	1.1	0.0195	60	0.074	0.074	0.099	0.103	1539
24	1.4	0.0254	60	0.097	0.096	0.137	0.138	2864
22	1.7	0.0314	60	0.120	0.120	0.172	0.171	4369
20	2.1	0.0374	60	0.143	0.143	0.204	0.204	5321

Allowable Reactions at Supports Based on Web Crippling, R_n/Ω (lb/ft)

Bearing Length of Webs												
One-Flange Loading							Two-Flange Loading					
Deck Gage	End Bearing				Interior Bearing		End Bearing				Interior Bearing	
	1 1/2"	2"	3"	4"	3"	4"	1 1/2"	2"	3"	4"	3"	4"
26	445	492	571	638	829	916	388	421	477	523	972	1081
24	729	803	927	1032	1366	1504	706	763	858	938	1643	1820
22	1078	1184	1361	1510	2029	2225	1122	1207	1350	1471	2478	2736
20	1486	1627	1863	2062	2804	3066	1631	1749	1948	2116	3463	3813

Standard Features

- ASTM A653 SS GR80 with G90
- Standard lengths – 6'-0" to 40'-0"
- IAPMO UES ER-2018 and UL Listed
- Tables conform to ANSI/SDI NC-2017 and RD-2017

Optional Features

- Inquire regarding cost and lead times for:
 - Short cuts < 6'-0"
 - Sheet Lengths > 40'-0"
 - Alternative metallic and painted finishes
- Side-lap Venting

NOTICE: Design defects that could cause injury or death may result from relying on the information in this document without independent verification by a qualified professional. The information in this document is provided "AS IS". Nucor Corporation and its affiliates expressly disclaim: (i) any and all representations, warranties and conditions and (ii) all liability arising out of or related to this document and the information in it.