

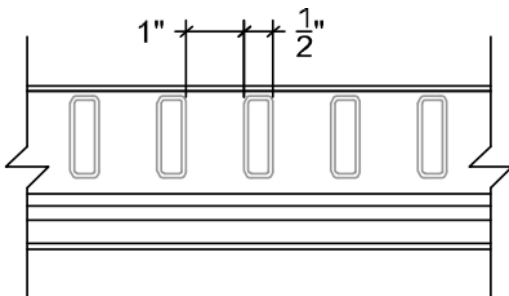
March 2021

New PLW3/W3-36 FormLok™ Embossments

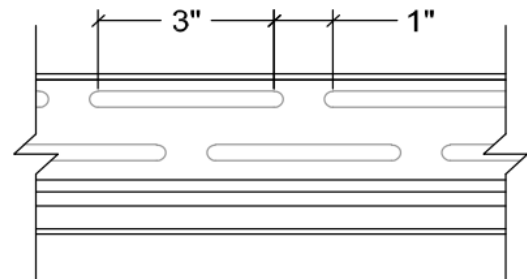
With the new IBC 2018/CBC-2019 Verco Decking has updated the embossments for our PLW3/W3-36 FormLok™ deck.

The new PLW3/W3-36 FormLok™ embossment pattern is compatible with the values published in the legacy IAPMO ER-0217 and the new IAPMO ER-2018 with Verco's web-based design tools. The two embossment patterns may be used interchangeably in assemblies based on the above reports.

W3 Legacy Embossment Pattern



New W3 Embossment Pattern



As of March 08, 2021, Verco will no longer produce deck with the old PLW3/W3-36 embossments. The only exception will be ongoing project(s) where Verco has already shipped deck with the old embossment pattern.

If you have any additional questions or concerns, or if you wish to discuss this further, please feel free to contact me directly.

Best regards,

Kelsey Lavicka,
Engineer, PE
Verco Decking, Inc. - a **Nucor Company**
602-353-2004 Office
KLavicka@vercodeck.com